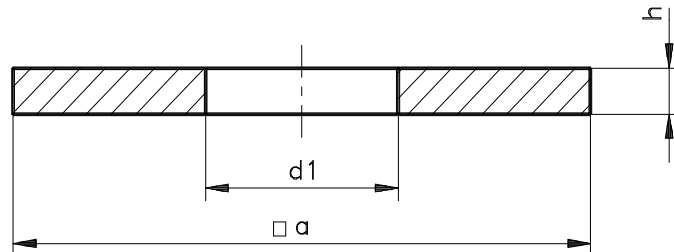
 <b>LINDE AG</b> Process Engineering and Contracting Division	<b>Shims</b>		LINDE STANDARD  <b>445-21</b>
Orig.: Hent/Ak.	Checked.: Hent	Appr.: Hent	Total 1 Page

Dimensions in mm / Unit of Quantity Piece / TLB according LS  
 Identnumber and Stock Keeping see Teilekatalog



Example for designation: Part name, hole diameter d1 (33), standard (LS 445-21), material (ST37)

SHIM 33 LS 445-21 ST37

d1	h	a	For Bolt	Weight kg/Stück	Material	
					-20 °C a. Warmer	-21 °C to -50 °C
18	16	70	M 16	0,58	St37-2	St52-3
22	20	80	M 20	0,95		
26	20	90	M 24	1,2		
33	20	100	M 30	1,4		
39	20	110	M 36	1,7		
45	25	120	M 42	2,5		
52	25	140	M 48	3,4		
62	30	160	M 56	5,3		
70	30	160	M 64	5,1		
80	35	180	M 72*6	7,5	St52-3	
86	40	190	M 80*6	9,5		
96	45	210	M 90*6	13		

Material: St37-2 acc. to DIN 17100

St52-3 acc. to DIN 17100

Tolerance acc. to DIN 7168 grob

If no other ordering informations given:

Derusting and prime coating acc. to LS 148-06 System VIII

#### Coding Table

Part Name, Required Characteristics	Coding Data for Part Generation											
	Norm	Norm/ Zeich-Nr	TN	BAF	VAR	ETR	ZB	ABM1	ABM2	ABM3	ABM4	ABM5
Shim	LS	445-21	SO	PL				d1				

Revision: Standard enlarged, dimensions revised, coating added, editorial revised.

Previous Issues: 04.83, 07.84

Copyright reserved.